

Course #2

FUKUOKA/OITA/SAGA/NAGASAKI

4 Nights 5 Days



FUKUOKA/OITA/SAGA/NAGASAKI 4 Nights 5 Days

DAY 1



FUKUOKA⇒KOKURA⇒MOJI

DAY 2



MOJI⇒KUNISAKI⇒KITSUKI
⇒BEPPU⇒YUFUIN

DAY 3



YUFUIN⇒KASHIMA ⇒ARITA ⇒URESHINO

DAY 4



URESHINO⇒NAGASAKI

DAY 5



NAGASAKI⇒HASHIMA⇒NAGASAKI Airport

ROUTE MAP

DAY 1 FUKUOKA – KOKURA - MOJI



Arrive at Fukuoka Airport via Singapore or other international airport.



From Fukuoka Airport, travel 20 minutes by private vehicle to Biken Kogeisha, where the celebrated Hakata dolls are made. Chikuzen Hakata doll making is a traditional craft that goes back some 400 years. Through a demonstration of the production process, learn how dedicated doll makers have honed their craftsmanship through the centuries. Observe how the craft reveals the spirit of the doll makers and the essence of their work before joining in by painting designs onto the dolls.



For lunch, enjoy the Hakata specialty of mizutaki. Chunks of chicken on the bone are simmered with seasonal vegetables then dipped in ponzu sauce to add flavour .



In the afternoon, travel one hour by private vehicle to Kokura Castle. Spend time in a traditional strolling garden with a pond that was restored from Edo-era remains and enjoy matcha green tea in a reproduction of a feudal lord's manor.

Spend a leisurely evening discovering the retro buildings that dot the shoreline of the Kanmon Straits.



Accommodation for the night is at Premier Hotel Mojiko, a 20th century designer hotel created by Italian virtuoso architect Aldo Rossi. Enjoy a leisurely stay at this unusual port town hotel, which overlooks the Kanmon Straits and a townscape brimming with exotic appeal.

MIZUTAKI



HAKATA DOLL



ENJOYING MATCHA



KOKURA CASTLE



MOJI STATION





KANMON BRIDGE


Accommodation: Premier Hotel Mojiko
<https://premierhotel-group.com/mojikohotel/>





DAY 2 MOJI – KUNISAKI –KITSUKI - BEPPU - YUFUIN


 Travel 90 minutes by private vehicle to Futagoji, the central Rokugo Manzan temple. It is located in the center of Kunisaki Peninsula and was founded in 718. Since the Edo era, the Manzan temples have been incorporated into the Tendai Buddhist sect. The Nio statues at the temple gate are the largest in Kunisaki. Due to the exquisite carving, they are now known as the most beautiful Nio statues on the peninsula.

 From Futagoji, travel 30 minutes by private vehicle to Kitsuki.

 For lunch, enjoy the celebrated Oita seafood barbecue.

 After lunch, head to Beppu by private vehicle, a journey of 30 minutes. Beppu traditional bamboo handicrafts such as vases and objets are highly rated for their designs. Spend time studying the detail and elegant individuality of the pieces before trying your hand at making a beautiful bamboo handicraft.

 From Beppu, head to Yufuin, some 30 minutes by private vehicle. Board a horse-drawn carriage and travel through the splendid countryside or rent a bicycle and explore this chic hot spring town.

 The night's accommodation is at Yufuin Tamanoyu. The 10,000-square-metre site is dotted with 16 standalone guestrooms surrounded by trees. There is a spacious feel to everything here, from the wooden baths constantly fed with hot spring water to the beds made of white Scandinavian wood. With the goal of using locally sourced foods, Yufuin Tamanoyu offers the finest ingredients, including fresh locally grown vegetables, Bungo Wagyu beef, Toyo chicken, sweetfish and brook trout, all of which are meticulously prepared to heighten their deliciousness.



FUTAGO TEMPLE



SEAFOOD BARBECUE



BAMBOO CRAFTS CENTER



HORSE-DRAWN CARRIAGE

Accommodation: Tamanoyu
<https://www.tamanoyu.co.jp/english.html>



DAY3 YUFUIN – KASHIMA – ARITA – URESHINO



Travel two hours by private vehicle to Kashima. Here, a unique and very muddy sporting festival known as Gatalympics takes advantage of the mudflats of the Ariake Sea, which has the largest tidal range in Japan. There are numerous bizarre events, such as Gata Ski, which uses fishing tackle unique to Ariake, a bicycle race across the mudflats, an event known as Gatafly and a treasure hunt in the mud.



GATALYMPICS



For lunch, head to Tarakaki Kaido, a street famous for the local specialty of Takezaki oysters. The Ariake Sea, where Takezaki oysters grow, has a relatively low salt concentration that makes the oysters remarkably sweet and rich in umami.



TAKEZAKI OYSTER



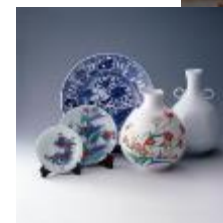
In the afternoon, continue on to Yutoku Inari Shrine, an impressively resplendent structure that glows vermilion against the greenery of the forest. The shrine, which has been dubbed “Chinzei Nikko” because of its beauty, attracts some 3 million worshippers each year.



YUTOKU INARI SHRINE



From Yutoku Inari Shrine, the next stop is Arita. After the Dutch East India Company began buying up Arita porcelain in 1650, Ko-Imari porcelain became hugely popular among royalty and nobility in Europe, where it was used as decoration rather than appreciated for its functionality. Ko-Imari porcelain was the forerunner of today's Meissen porcelain.



ARITA CERAMICS



Accommodation for the night is at Shiiba Sanso, a secluded ryokan on the bank of Shiiba River between the lush green Mount Shiiba and the tranquil rice terraces. Among untouched nature, savour the murmur of the river and the sound of the wind as it collects in the valley. For dinner, feast on Shiiba kaiseki, which highlights local seasonal ingredients centered around specially selected beef.

Accommodation: Shiibasanso
https://www.shiibasanso.com/lg_en/



DAY4 URESHINO – NAGASAKI



Travel two hours by private vehicle to the city of Nagasaki, the last place to be atom bombed.

At 11:02 am on August 9th, 1945, an atomic bomb exploded over the Urakami district of Nagasaki, killing some 150,000 people. Visit the Nagasaki Atomic Bomb Museum to learn about the events leading up to the atomic bombing and the horror that followed, as well as reconstruction of Nagasaki to the present, the history of nuclear weapons and the desire for peace in a world free of such weapons.

No name is given for the museum. I'm guessing it's this one.



For lunch, spend time in Chinatown feasting on the local specialties of Nagasaki champon and sara udon noodles.



In the afternoon, head to Nishizaka Hill to a museum that commemorates the martyrdom of six foreign missionaries and 20 Japanese believers on February 5th, 1597. Numerous exhibits introduce the history of Christianity in Japan, from the period of persecution and the prayers of the so-called "hidden Christians" to the revival of the faith in the Meiji era.

Continue on to the nationally designated historic site of Dejima. Completed in 1636, this artificial island was first inhabited by the Portuguese. In 1641, a Dutch trading post was established and for the next 200 years Dejima acted as Japan's only open door to trade from the West. Feel free to don a kimono and head out on a leisurely stroll around this fascinating district.



Accommodation for the night is at the sensational Garden Terrace Nagasaki Hotel & Resort. Enjoy the elegance of this city hotel while taking in the breathtaking nighttime view of Nagasaki, ranked as one of the world's three best night views. For dinner, enjoy seasonal fish fresh from Nagasaki in the form of sushi kaiseki.

Accommodation: Garden Terrace Nagasaki Hotel & Resorts
<https://www.gt-nagasaki.jp/>



NAGASAKI PEACE PARK



TWENTY-SIX MARTYRS MUSEUM AND MONUMENT



NAGASAKI CHAMPON



DEJIMA



DAY5 NAGASAKI – HASHIMA – NAGASAKI Airport



Spend 2.5 hours touring Gunkanjima. The time includes travel by private boat.

This small undersea coalmine island comprises high-rise reinforced concrete buildings surrounded by quay walls, giving it the appearance of a warship. As such, it has become known as Gunkanjima (“battleship island”). At its peak in 1960, some 5,300 people lived on the island. With an elementary school and junior high school, as well as a hospital, the island was able to fully support its inhabitants. There were even entertainment facilities such as a cinema and pachinko parlor. The mine was closed and the island deserted in 1974 after Japan’s main energy source shifted from coal to oil. During the tour, the remains of the No. 2 shaft, which was the main coal pit, the brick-built general office from where the Hashima Coal Mine was run, and Japan’s oldest reinforced concrete building, the seven-story No. 30 apartment block, which was built in 1916, can all be seen from the prescribed sightseeing route.



**HASHIMA, A.K.A.
GUNKANJIMA
("Battleship island")**



For lunch, enjoy a barbecue of top-quality locally produced beef, pork and vegetables at Omura Dream Farm ChouChou.



After lunch, Travel the 40 minutes to Nagasaki Airport by private vehicle and return to Australia via Haneda Airport.



DREAM FARM CHOUCHOU

